

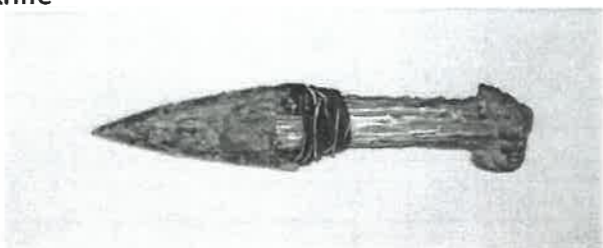
Knives

Blade



40,000 to 10,000 years ago (8,000 BCE)
Upper Palaeolithic to Mesolithic

Knife



2500 to 1500 BCE
Early Bronze Age

Knife



2300-1800 BCE
Early Bronze Age

Knife



500-50 BCE
Middle to Late Iron Age

First Firstly the knives were a flint stone on a handle, then evolved to a curved blade with a thin handle.

Arrowheads

Leaf-shaped arrowhead



4000 to 2000 BCE
Neolithic to Early Bronze Age

Socketed spearhead



1800-1200 BCE
Middle Bronze Age

Spearhead



200-50 BCE
Late Iron Age

At first arrowheads/spearheads were rounded and had no handle. More recently they had a thin handle and pointed blade.

Swords

Sword



1200-800 BCE
Late Bronze Age

Sword

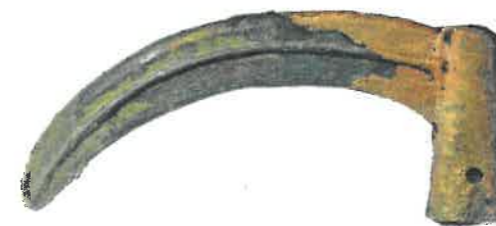


300-200 BCE
Middle Iron Age

Swords changed by the handles became more detailed and better carvings.

Sickles

Sickle



1200-800 BCE
Late Bronze Age

Sickle and plough tip



200 BCE - 50 CE
Late Iron Age

Sickles did not change much over the years, really their handle just got thinner and longer.

Misc.

Chopper



2.6-1.8 million years ago
Lower Palaeolithic

Microlith



8000 to 4000 BCE
Mesolithic